

Release Notes

BazePort® 4.5

- Portal release
- Management studio services added

Revisjon 1.0 TR/ENLV

Document notes:

1.0	June 1 st 2011	Release	tr	tr
0.2	May 31 st 2011	Revision	BazePort group	
0.1	May 11 th 2011	initial document	tr	
Rev.	Date	Description	Prepared	Approved
Document name		Release Notes BazePort 4.5	Doc.no	00201211

TABLE OF CONTENTS

- 1 INTRODUCTION 3
- 2 FIRMWARE SPESIFICATION..... 3
- 3 HARDWARE COMPABILITY 3
- 4 NETWORK MANAGEMENT 3
- 6 ENTERTAINMENT MODE 5
 - 6.1 PORTAL 5
- 7 DESKTOP MODE..... 6
 - 7.1 CONTRIBUTE ACCESS 6
- 8 MANAGEMENT STUDIO..... 6
 - 8.1 NEW ROUTINE FOR AUTHENTICATION 6
 - 8.2 MANUEL AUDIO OUTPUT SELECTION 7
 - 8.3 PPS file support..... 7
 - 8.4 FORCED SCREEN RESOLUTION 8
 - 8.5 CHANNEL VALIDATION 8
 - 8.6 DE-SCRAMBLING ERRORS 8
 - 8.7 NORWEGIAN KEYBOARD LAYOUT SUPPORT 8
- 9 CONTRIBUTE 9
 - 9.1 PORTAL EDIT 9
- 10 BAZEPORTR SERVER..... 11
- 11 REQUIREMENTS..... 11
- 12 UPGRADE INFORMATION 11
- 13 BUG FIXES 11
- 14 ABOUT BAZEPORTR INFOTAINMENT 11

Description	Date	Revision	Page 2 of 11	Approved
Release Notes BazePort 4.1	1-Jun-11	1.0	Page 2 of 11	SOL/TR/ENLV

1 INTRODUCTION

This release of BazePort 4 software, version 4.5, contains several enhancements to the BazePort Infotainment system software. There is also bug fixes and improved robustness in the release. All changes, enhancements and bug fixes are tested and ready for deployment.

It is always recommended that one thoroughly review the release note prior to the installation or upgrade of this product.

2 FIRMWARE SPESIFICATION

Status	Version	Type	Release
Current version	4.5	Main release	June 1st 2011
Previous version	4.2	Software/Customer	March 1 st 2011
Previous version	4.1	Software/Customer	Nov. 15 th 2010
Previous version	4.01	Software/Customer	Oct. 6 th 2010
Previous version	4.0	Main release	Sept. 7 th 2010

3 HARDWARE COMPABILITY

NAP

4 NETWORK MANAGEMENT

NAP

Enhancements in Entertainment mode in release 4.5:

- Portal functionality added

Enhancements in Management Studio in release 4.5:

- BazePort Contribute released
- Management Studio reorganized
- Channel validation enhanced for CCTV and other sources
- TV channel validation for discover of de-scrambling errors
- Device Manager: Manual audio output selection added
- Device Manager: Set screen resolution manually added

Enhancements in Contribute in release 4.5:

- Info Screen: Power Point PPS file support added

Changes in BazePort Server in release 4.5:

- Several “under the hood” enhancements for better and simpler configurability.

Bug fixes in BazePort 4.5:

Client

- Full PVR hard disk error fixed

Description	Date	Revision	Page	Approved
Release Notes BazePort 4.5	1-Jun-11	1.0	Page 4 of 11	SOL/TR/ENLV

6 ENTERTAINMENT MODE

6.1 PORTAL

With the release of BazePort Infotainment version 4.5 the new PORTAL has been introduced. This Portal enhances the information part of the system. This has up until now, since the release of v.4.0, been covered by the Info Screen functionality (built in digital signage). As digital signage is a passive information application, the new PORTAL is considered an interactive information application. Interactive in the sense that the BazePort user chooses his/her content on screen with the remote control, and not passive as it is with digital signage where one is subject to what is presented on screen in a predefined sequence.

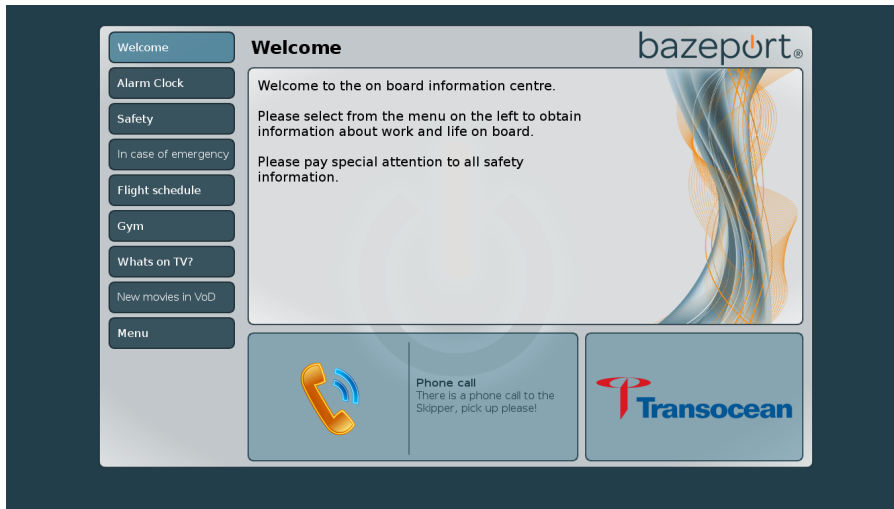


Figure 1 Welcome page in PORTAL, an example

The PORTAL consist of a menu on the left hand side (1.), a text area (2.) with possibility for built in picture or video (2a), a bulletin board (3.) and a owner logo area (4)



Figure 2 BazePort PORTAL with references to functionality mentioned above

The PORTAL is amendable for all users with access to BazePort Contribute. DESKTOP MODE

Description	Date	Revision	Page	Approved
Release Notes BazePort 4.5	1-Jun-11	1.0	Page 5 of 11	SOL/TR/ENLV

7 DESKTOP MODE

7.1 CONTRIBUTE ACCESS

Access for Super-users to BazePort Contribute application has been added in Desktop Mode.

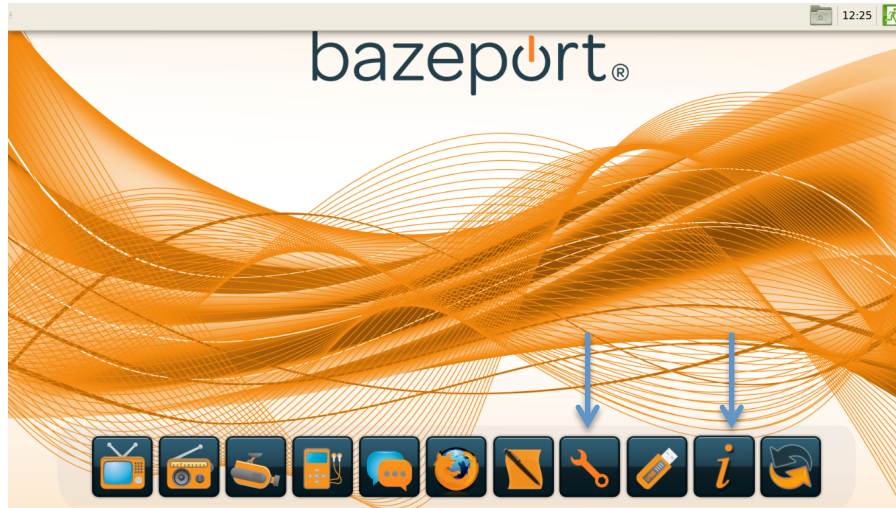


Figure 3 The i symbol gives access to BazePort Contribute, the wrench to BazePort Management Studio

8 MANAGEMENT STUDIO

8.1 NEW ROUTINE FOR AUTHENTICATION

A single sign on possibility has been developed for super-users using both Contribute and Management Studio, but Individual access can be given when you want to appoint users with e.g. only access for content publishing. Single sign on also provides direct access for granted users to Management Studio and Contribute from Desktop Mode.

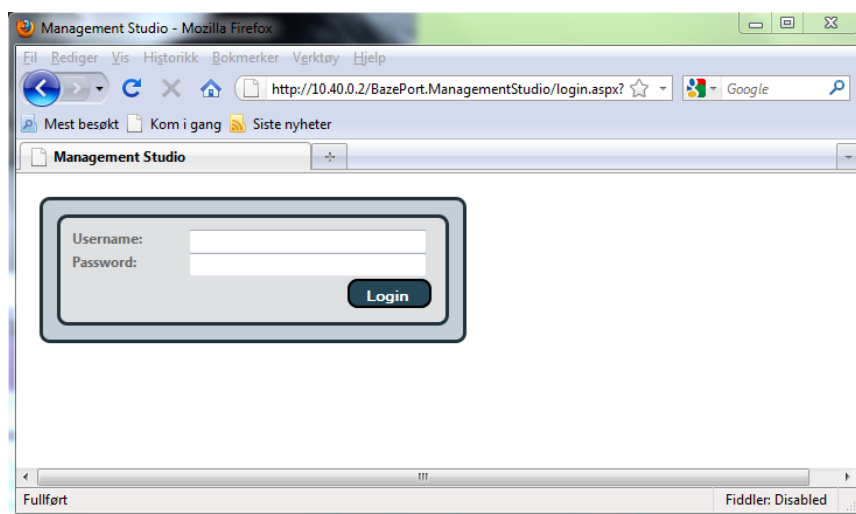


Figure 4 Login to Management studio or Contribute can be single sign-on or individual

BazePort Management Studio with access to BazePort Contribute.

Description	Date	Revision		Approved
Release Notes BazePort 4.1	1-Jun-11	1.0	Page 6 of 11	SOL/TR/ENLV

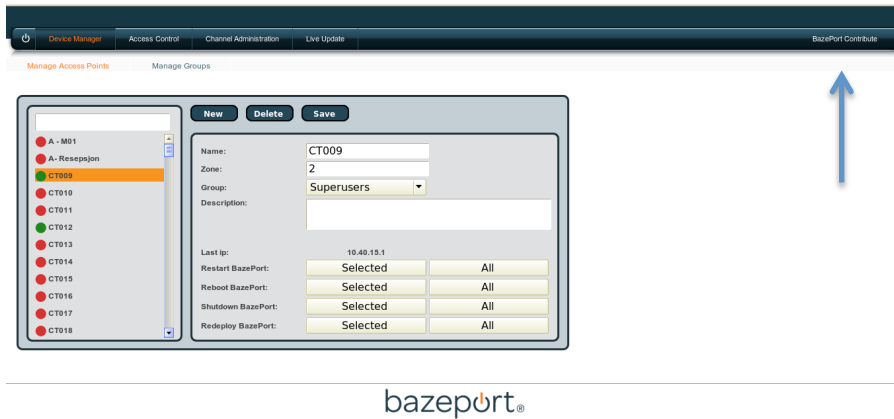


Figure 5 Illustration shows access from Management Studio to Contribute

8.2 MANUEL AUDIO OUTPUT SELECTION

In version 4.5 a manual selection for output to Mini-Jack is added. Default setup is output sound through HDMI. This manual override is for BazePort used with Stereo, projector and other peripheral equipment.

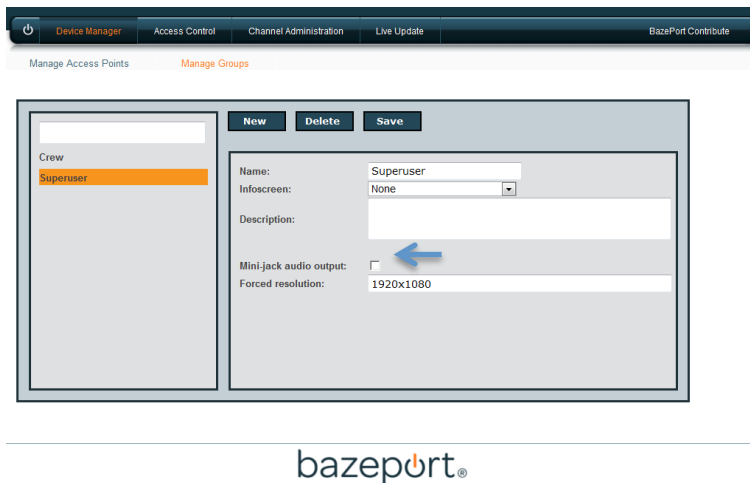


Figure 6 Mini Jack output selection

8.3 PPS FILE SUPPORT

Support for PPS (power point show files) files has been added to the info screen application.

Description	Date	Revision		Approved
Release Notes BazePort 4.1	1-Jun-11	1.0	Page 7 of 11	SOL/TR/ENLV

8.4 FORCED SCREEN RESOLUTION

New to version 4.5 is the ability to set a forced screen resolution. This option is only to be used with TV sets that do not scale correctly. This override should be used with caution. The forced resolution choice field is seen on screen shot above (figure 7).

8.5 CHANNEL VALIDATION

From version 4.5 BazePort has the ability to validate streams of CCTV and similar, in addition to validating TV-channels (previous release) the validation is visual in the Channel administration panel.

8.6 DE-SCRAMBLING ERRORS

A new feature for discovering de-scrambling errors on TV channels has been implemented. Result is visible in the Channel administration panel.

8.7 NORWEGIAN KEYBOARD LAYOUT SUPPORT

A patch for manual connection/use of Norwegian layout keyboard has ben implemented.

Description	Date	Revision	Page	Approved
Release Notes BazePort 4.5	1-Jun-11	1.0	Page 8 of 11	SOL/TR/ENLV

9 CONTRIBUTE

BazePort Contribute is new from version 4.5. Contribute will hold all applications used to publish content in BazePort. Some of these applications were earlier part of Management Studio, but with the introduction of the PORTAL the publish applications (Contribution) and config application (Management Studio) has been separated.

BazePort Contribute application provides access for editing Portal (Portal and Bulletin board) Info Screen (digital signage), File Manager (file upload) and Send Message (silent PA functionality)

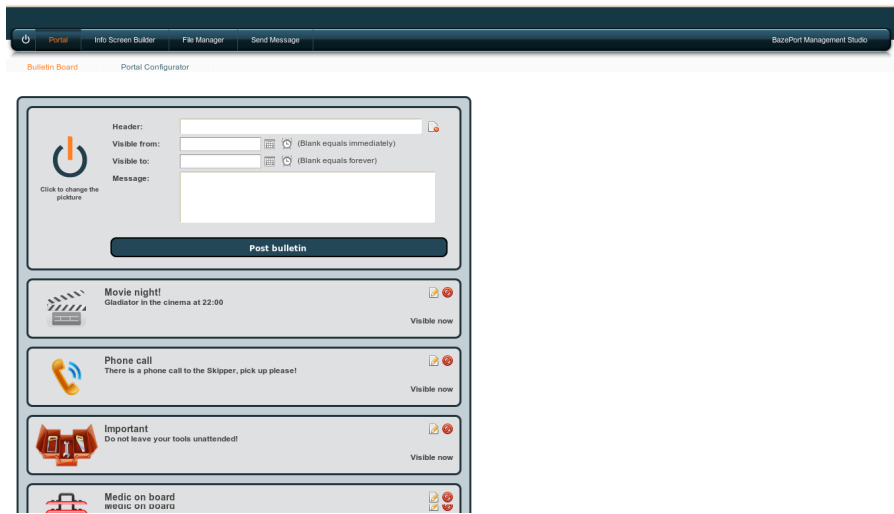


Figure 7 BazePort contribute with access to all functionality for edit and publishing of content. Figure shows the editor for the bulletin board in the PORTAL.

9.1 PORTAL EDIT

The interface (GUI) used for publishing content is based on the same GUI as the PORTAL. The PORTAL edit application is part of BazePort Contribute, where all publishing of content to the different BazePort information functionality is done.

When in edit modus portal menu can be added and edited. Symbols for edit appear when menu is selected. (figure below)



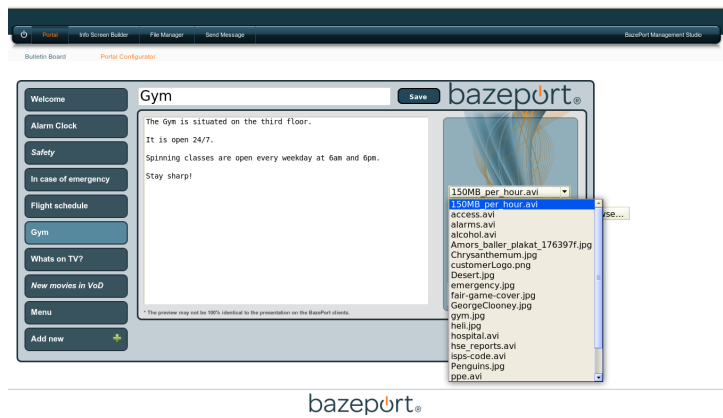
Figure 8 Portal in edit modus inside BazePort Contribute

Description	Date	Revision	Page	Approved
Release Notes BazePort 4.5	1-Jun-11	1.0	Page 9 of 11	SOL/TR/ENLV

When Selected the Text area becomes writeable (figure below)



When picture/film area is click user can add picture or film (figure below)



The Bulletin board is published using the application shown in figure 5 .

Description	Date	Revision	Page	Approved
Release Notes BazePort 4.1	1-Jun-11	1.0	Page 10 of 11	SOL/TR/ENLV

10 BAZEPORTE SERVER

Minor “under the hood” upgrades implemented for better and faster configurability.

11 REQUIREMENTS

Release 4.5 requires BazePort 4.2 pre-installed.

12 UPGRADE INFORMATION

All BazePort 4 installations with a valid BazePort Software Maintenance Programme are eligible for an upgrade. No updates are being done without client appointment.

13 BUG FIXES

Full PVR hard disk on client resulted in not able to delete content, fixed

14 ABOUT BAZEPORTE INFOTAINMENT

BazePort® is a registered trademark owned by Baze Technology AS. BazePort Infotainment software and licenses are owned and developed by Baze Technology AS. Baze Technology AS is a Norwegian company with registration number NO 991 658 920. More information at website www.bazetechnology.com

--- End of document ---

Description	Date	Revision		Approved
Release Notes BazePort 4.5	1-Jun-11	1.0	Page 11 of 11	SOL/TR/ENLV