

Release Notes

BazePort® 4.6

And

BCS 2.0

Revision 1.0

Document notes:

1.0	Nov 1 st 2011	Release	tr	tr
0.4	Oct 31 st 2011	Desktop mode details	tr	
0.3	Oct 30 th 2011	Revision	kng	
0.2	Oct 27 st 2011	Content revised	BazePort group	
0.1	Oct 15 th 2011	initial document	tr/eaav	
Rev.	Date	Description	Prepared	Approved
Document name		Release Notes BazePort 4.6	Doc.no	100201046

www.bazeport.no
www.bazetechnology.com

Description	Date	Revision	Page	Approved
Release Notes BazePort 4.6	November 1 st 2011	1.0	Page 1 of 12	TR

TABLE OF CONTENTS

1 NOTICE..... 3

2 INTRODUCTION 3

3 FIRMWARE SPECIFICATION 3

4 HARDWARE COMPATIBILITY 4

5 NETWORK MANAGEMENT 4

8 BAZEPORT NEWS 5

 8.1 SERIES ON DEMAND 5

 8.2 TXT TV 7

 8.3 CHANNEL LIST FOR “QUICKZAP” 9

9 BAZEPORT CONTENT SERVICES –NEWS..... 10

 9.1 VIDEO ON DEMAND ORDERED THROUGH BAZEPORT CONTENT SERVICES 10

10 NEW VIDEO ON DEMAND ADMIN CLIENT FEATURES..... 11

11 DESKTOP MODE..... 12

12 BAZEPORT SERVER..... 12

13 REQUIREMENTS..... 12

14 UPGRADE INFORMATION 12

15 BUG FIXES 12

16 ABOUT BAZEPORT INFOTAINMENT 12

Description	Date	Revision	Page	Approved
Release Notes BazePort 4.6	November 1 st 2011	1.0	Page 2 of 12	TR/ENLV

1 NOTICE

It is strongly recommended that one thoroughly review this release note in full prior to the installation or upgrade of this product.

Important notice: PVR recordings done or scheduled on CT client will be deleted during redeploy of the CT client (BazePort unit). Alarm clock schedules must also be re-set by user. It is recommended that one uses the built in Send Message functionality to broadcast this info to the user.

If you have any questions about this release, BazePort use, or how to upgrade contact your system administrator or your designated support centre.

2 INTRODUCTION

This release of BazePort 4 software, version 4.6, contains several major enhancements to the BazePort Infotainment system software. There are also several bug fixes, improved robustness and user interface enhancements in the 4.6 release. Making it the best BazePort to date.

All changes, enhancements and bug fixes are tested and ready for deployment. However, upgrades from BazePort version 3.x to 4.6 should not be performed before consulting your system administrator or the vendor. BazePort 3.x installed with TV/Monitors not able to use a minimum resolution of 1280x720 will not be able to utilise BazePort 4.x.

This release note also covers BazePort Content Services release 2.0 (BCS 2.0). As BazePort 4.6 and BCS 2.0 are dependent on each other for full use of services we have chosen this simultaneous release.

3 FIRMWARE SPECIFICATION

Status	Version	Type	Release
Current version	4.6	Software/Customer	Nov. 1 st 2011
Current version	4.5	Main release	June 1 st 2011
Previous version	4.2	Software/Customer	March 1 st 2011
Previous version	4.1	Software/Customer	Nov. 15 th 2010
Previous version	4.01	Software/Customer	Oct. 6 th 2010
Previous version	4.0	Main release	Sept. 7 th 2010

Description	Date	Revision	Page	Approved
Release Notes BazePort 4.6	November 1 st 2011	1.0	Page 3 of 12	TR/ENLV

4 HARDWARE COMPATIBILITY

BazePort Infotainment v 4.6 can be used by the following BazePort units, CT-114, CT-113 (Veriton, 3600, 3700), CT-116 (touch screen model) and CT-125.

5 NETWORK MANAGEMENT

NAP

6 BAZEPORT 4.6 SOFTWARE CHANGES AND ENHANCEMENTS

News in BazePort release 4.6:

- Series On Demand
- Text-TV
- Channel list for “quickzap”
- Support for ordering movies through BazePort Content Service; Video on Demand.
- Video on Demand Admin Client software divided into three “modes”; videos, series and recordings. For enhanced ease of use and management.

Enhancements in BazePort release 4.6:

- Major increased performance for Video On Demand
- Major increased performance for Public Recordings in PVR
- More intuitive EPG navigation.
- HD support by “firmware”
- Desktop Mode redesign

Enhancements in Management Studio in release 4.6:

- Increased performance and speed for Management studio and BazePort Contribute
- Reboot, Restart, Shutdown and Redeploy implemented on group level (manage groups)
- Restart now includes “new configuration upload to client”, previously only available in reboot.

Changes in BazePort Server in release 4.6:

- Several “under the hood” enhancements for even better and simpler commissioning. Including new on screen start up guide for better error identification.
- Enhanced performance to key elements.

Other news in BazePort release 4.6:

- Mac and IP address identification using “who am i” function.
- New error search functionality

Bug fixes in BazePort 4.6:

- Several bug fixes implemented

Description	Date	Revision		Approved
Release Notes BazePort 4.6	November 1 st 2011	1.0	Page 4 of 12	TR

7 BCS 2.0 NEWS, CHANGES AND ENHANCEMENTS

News in BCS 2.0

- Order Movies from BCS movie library

Enhancements in BCS release 2.0:

- Improved functionality for queuing and transfers
- Several BCS interface improvements

Other news in BCS release 2.0:

- Transfer speed changed from average speed to speed at moment
- Several bug fixes

8 BAZEPORT NEWS

8.1 SERIES ON DEMAND

With the release of BazePort Infotainment version 4.6 a new interface for **Series on Demand (SoD)** has been introduced. In the Video on Demand (VoD) section of BazePort, we found that a normal VoD interface is not suitable for presenting TV series. This is due to that a TV-series consists of seasons and episodes, not just one single track as is the case with films.

When opening VoD by using the designated button on the remote control. A new option is accessible by using the multi functional coloured buttons on the remote. On the screen, in the down right corner, the blue button is followed by the text "Series on Demand". By selecting the blue button on the remote, user can switch between VoD and SoD selections.

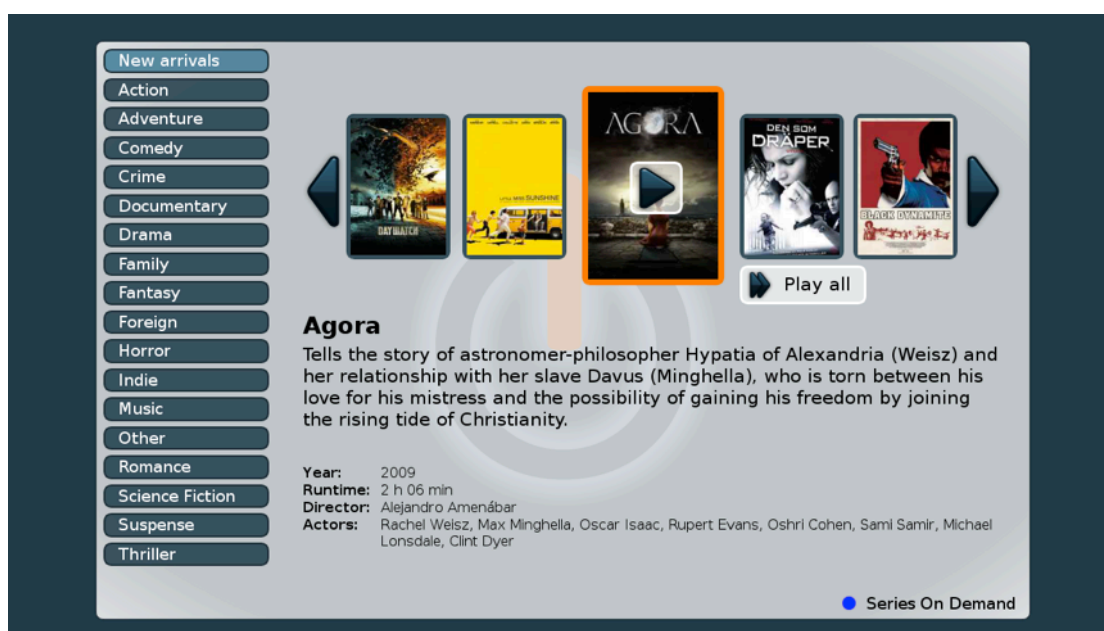


Figure 1: Select Series on Demand by selecting the blue button on the remote control.

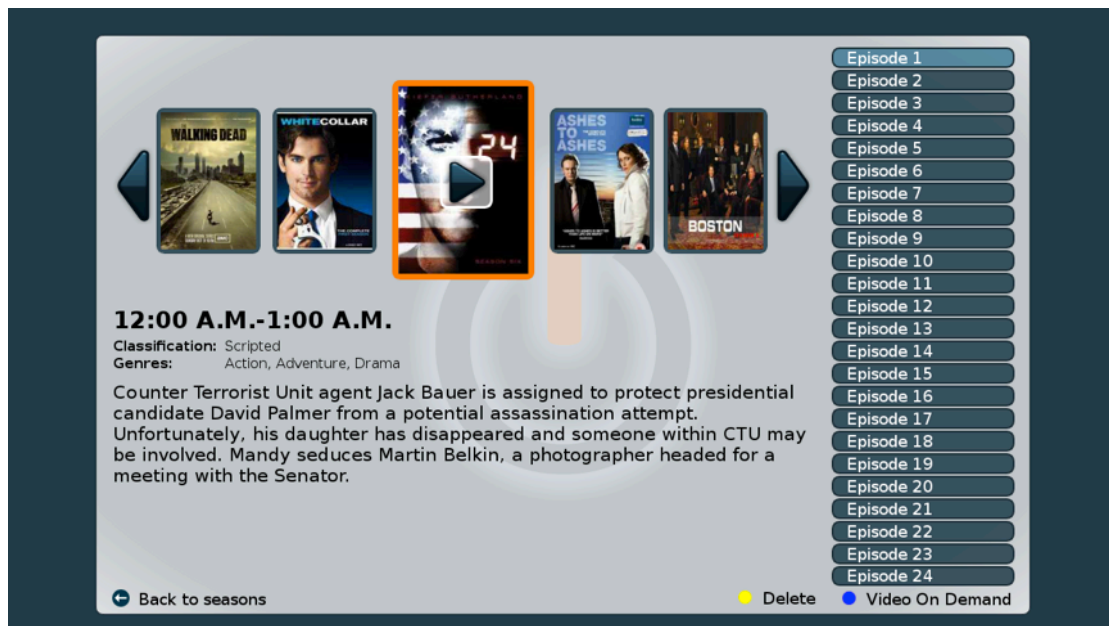
Description	Date	Revision	Page	Approved
Release Notes BazePort 4.6	November 1 st 2011	1.0	Page 5 of 12	TR

After Selecting Series on Demand the following screen (content dependent) opens. Using the navigation buttons on the remote, users can look through the content in the Series section.



Figure 2: Note that in SoD the blue multi choice button now takes you back to the VoD section.

When selecting a series, like “24” in this case, by pressing the OK button on the BazePort remote control. BazePort will expose the different episodes available for this particular TV-series (picture below).



Now the viewer can select the desired episode to watch.

Note that an already watched episode will have a green labelled “episode #” menu, whilst a partially watch episode will have a partially green “episode #” menu button.

The yellow button named “Delete” in the picture above is only available to a user with “super user” privileges, allowing for easy maintenance of the library.

Description	Date	Revision	Page	Approved
Release Notes BazePort 4.6	November 1 st 2011	1.0	Page 6 of 12	TR/ENLV

8.2 TXT TV

New to BazePort release 4.6 is TXT-TV. A feature implemented in response to our users wish list. While watching TV, press the yellow multifunctional button. The TV picture will turn grey, and the TXT-TV navigation window will open at the upper left corner.



Figure 3 A yellow TXT button will appear when TXT-TV is available on the selected TV Channels

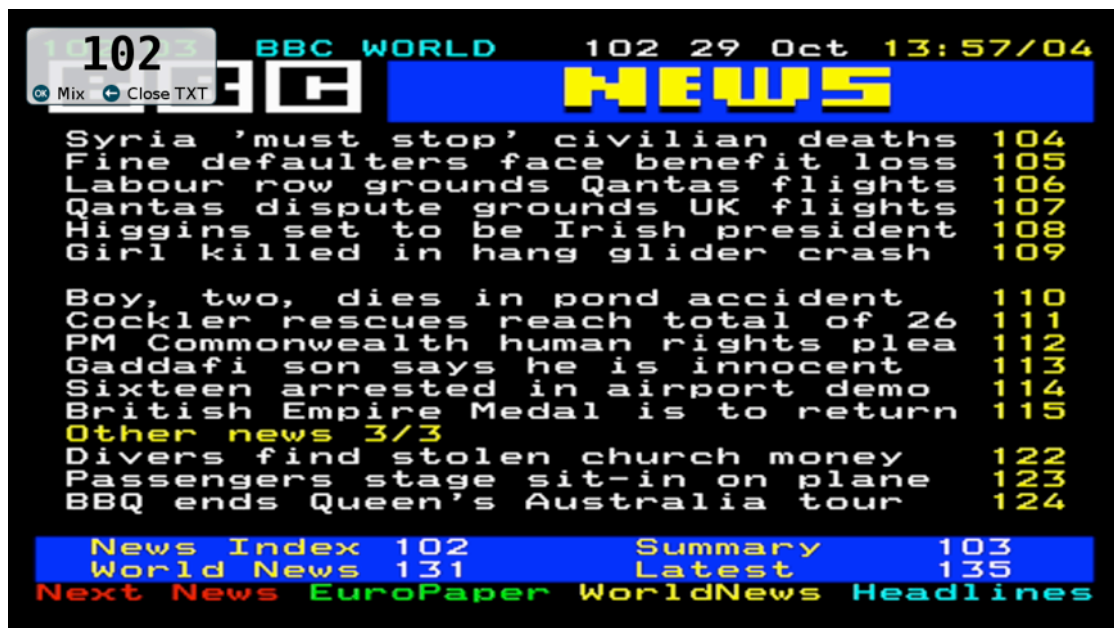


Figure 4 TXT-TV in BazePort.

Description	Date	Revision	Page	Approved
Release Notes BazePort 4.6	November 1 st 2011	1.0	Page 7 of 12	TR/ENLV

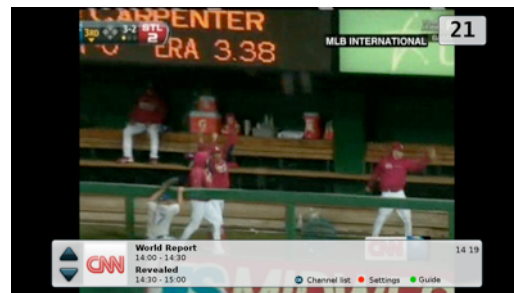
Use the + and – channel selection button to browse through pages, or enter the page number directly on the remote control number pad.

Use of the multi functional coloured buttons for direct access to certain pages on the TXT-TV service is not supported as they are used for other purposes within BazePort.

Please note; Only on TV channels that has TXT-TV as part of their service will you be able to select this content. If there is no yellow button on the info bar in TV mode, displaying TXT, the service is not part of the content provided by the TV channel.



Channels **with** TXT as part of service



Channels **without** TXT as part of service



TXT-TV is only available on TV channels that supports and broadcast such content, and when such content can be extracted from the source separately.

Description	Date	Revision	Page	Approved
Release Notes BazePort 4.6	November 1 st 2011	1.0	Page 8 of 12	TR/ENLV

8.3 CHANNEL LIST FOR “QUICKZAP”

When in TV mode, a press on the OK button will launch the new “Quick zap” navigation bar. This is a third way on how to navigate to or zap through TV channels.

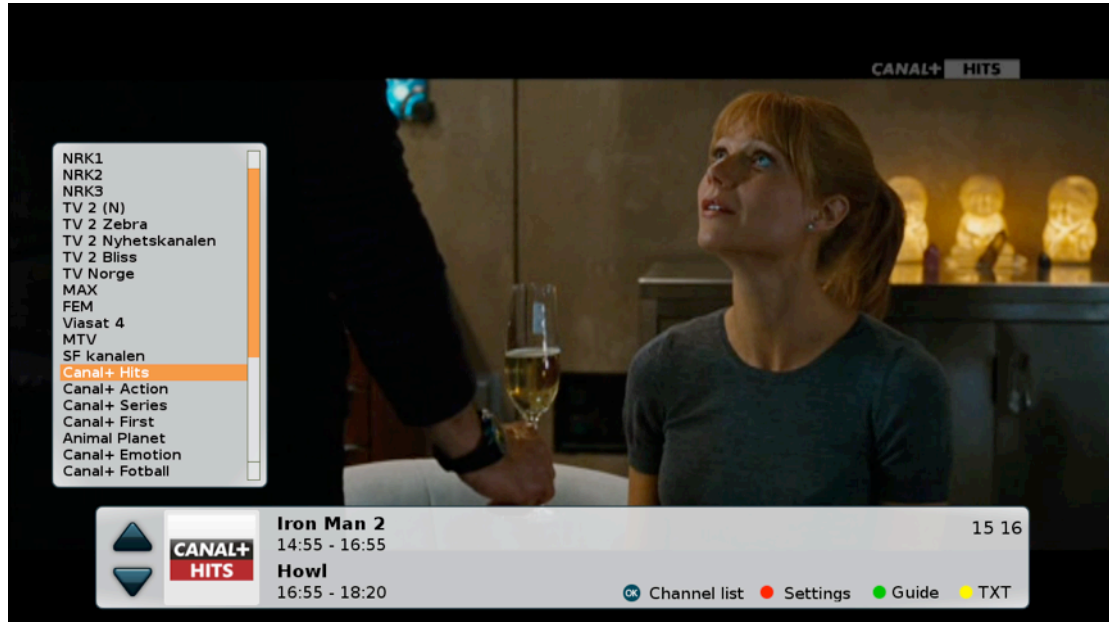


Figure 5 Quick zap directly using the OK, and navigation button.

Other ways of selecting TV channels are by pressing the channel number directly on the number pad, or using the CH/PG button on the remote control.

Description	Date	Revision	Page	Approved
Release Notes BazePort 4.6	November 1 st 2011	1.0	Page 9 of 12	TR

9.1 VIDEO ON DEMAND ORDERED THROUGH BAZEPORT CONTENT SERVICES

With the release of BazePort Content Services 2.0 an all new Video on Demand remote order service is introduced. The VoD remote service lets BazePort users order films directly from the BCS film library and download them to their own BazePort VoD server onboard their vessel, oil rig, accommodation or hospitality location. BazePort’s unique download functionality for users with limited bandwidth such as VSAT will benefit from this service. This BCS VoD service is a subscription service like Remote-TV that has previously been released as part of BCS. Ask your BazePort system administrator or the vendor for more information on how to obtain BCS services for your BazePort installation. All types of bandwidth services can use this service without interfering with your other services utilizing your VSAT or broadband connection.

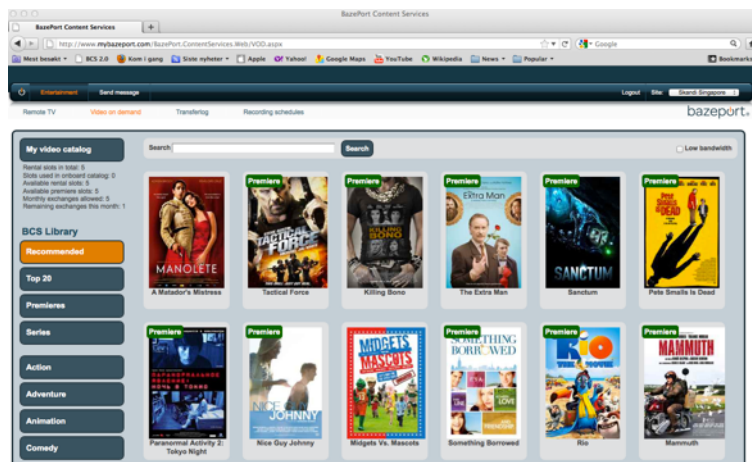


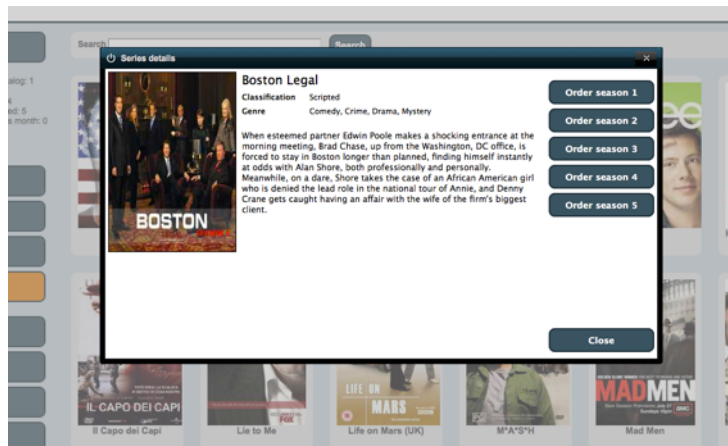
Figure 6 The BCS Video on Demand library is now accessible through the web.

A BCS subscriber can access the VoD library through the webpage, www.mybazeport.com. A subscriber can find the content of his library by selecting My video catalogue. The number of films in a users library is dependent on the type of subscription. When selecting a film you would like to move to your local VoD server, click the desired film icon on the web page. The Movie details window will open.



Description	Date	Revision	Page 10 of 12	Approved
Release Notes BazePort 4.6	November 1 st 2011	1.0	Page 10 of 12	TR

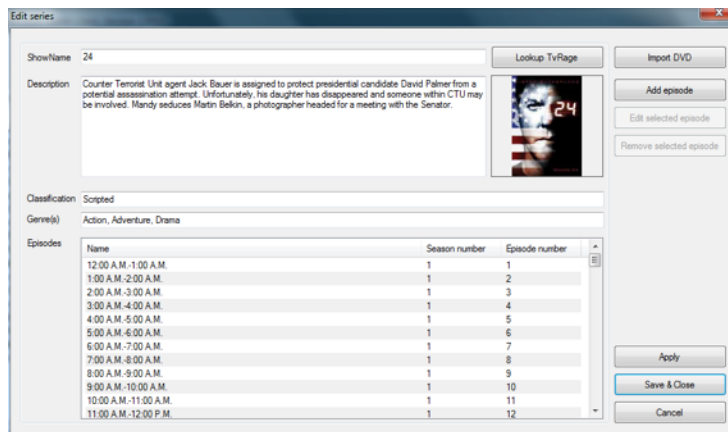
When selecting "Order" button on the Movie details window a message is sent to the BCS server, and the low bandwidth download service will commence. Also TV series can be ordered through BCS VoD service.



Contact your system administrator, supplier or the vendor for more information on the different BCS services.

10 NEW VIDEO ON DEMAND ADMIN CLIENT FEATURES

The Video on Demand client software, for use to administrate your VoD library has been updated with Series on Demand functionality. This allows for import of TV- series in an easy way, uploading several episodes at once.



For a full understanding on how to use this new feature, and all other news in this release note, we recommend you study the updated BazePort equipment user guide (user manual), or ask your system administrator or vendor for a demonstration.

Description	Date	Revision		Approved
Release Notes BazePort 4.6	November 1 st 2011	1.0	Page 11 of 12	TR/ENLV

11 DESKTOP MODE

Desktop Mode has been redesigned in BazePort 4.6. The mode switch from entertainment to desktop mode is now many times faster and all “black screen” has been eliminated. Users now also benefits from confirmation from the desktop when an action is performed.

12 BAZEPORT SERVER

Minor “under the hood” upgrades implemented for better and faster configurability.

13 REQUIREMENTS

Release 4.6 requires a BazePort 4.5 pre-installed.

BazePort 4.x requires use of monitors/TVs with a minimum resolution of 1280x720. this resolution is required for HD use. All native 16:9 resolutions will give the best result. Other good working resolutions are 1280x768, 1366x768, and 1360x768.

14 UPGRADE INFORMATION

All BazePort 4 installations with a valid BazePort Software Maintenance Programme are eligible for an upgrade. No updates are being done without client appointment. Contact the system administrator or the vendor for an upgrader to 4.6.

15 BUG FIXES

Several minor bug fixes implemented.

16 ABOUT BAZEPORT INFOTAINMENT

BazePort® is a registered trademark owned by Baze Technology AS. BazePort Infotainment software and licenses are owned and developed by Baze Technology AS. Baze Technology AS is a Norwegian company with registration number NO 991 658 920. More information at website www.bazetechnology.com

If you have any questions about this release, BazePort use or how to upgrade, contact your system administrator, support centre or call Baze Technology support on +47 94 800 600.

--- End of document ---

Description	Date	Revision		Approved
Release Notes BazePort 4.6	November 1 st 2011	1.0	Page 12 of 12	TR